

Bandhavgarh Wildlife Camp

Camp Code: **BAN221016WS**

Students (10 to 16 yrs)



All Departure Dates

Sr.	Batch Dates	Camp Code
1.	22-10-2016 To 27-10-2016	BAN221016WS

Overview

Camp Code: **BAN221016WS**

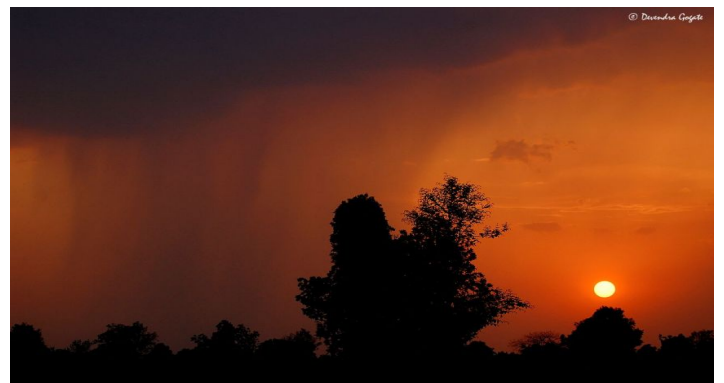
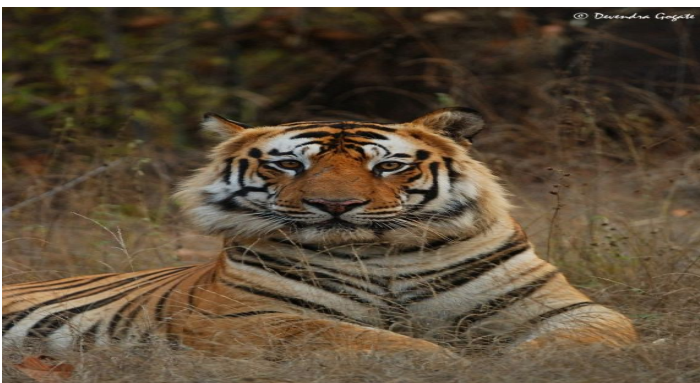
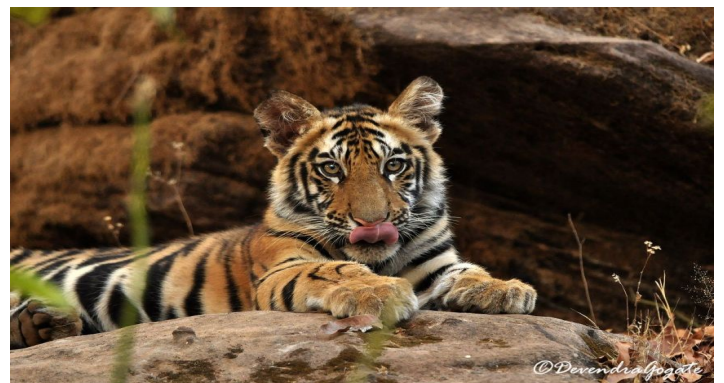
Set amongst Vindhya Hills, Bandhavgarh is one of India's premier areas for Tigers. It is best known as the "Tiger land" of India, for the highest density of tigers, as compared to rest of the country. One is assured sightings of this majestic animal almost any time of the year. The ruin of the ancient fort from which this park derives its name provides a stunning backdrop to this erstwhile hunting preserve of the Maharaja of Rewa. Bandhavgarh today attracts Tiger lovers from all over the world. It was here that the White Tiger was first recorded in the wild. The park has a great diversity of birds with a checklist of around 250 species.

Highlights of the trip:

- 5 jeep safaris that ensure great opportunities to see wildlife.
- Carefully crafted itinerary by experienced Wildlife Experts.
- Explore this beautiful jungle in the company of a Wildlife Expert from Foliage Outdoors.
- Accommodation in a wildlife lodge for 3 nights in luxurious AC rooms.
- Comfortable 3AC train travel from Mumbai - Jabalpur - Mumbai.
- Comfortable road travel by AC Innova (Jabalpur - Bandhavgarh - Jabalpur).
- Visit to spectacular Dhuadhar waterfall near Bhedaghat.

Photo Gallery

[More Images](#)



Tour Itinerary

Day 1 Pune - Mumbai, Mumbai Jabalpur overnight travel.

Assemble at Mumbai Pune Railway Station at 0700 hrs. Travel to Mumbai by 12126 Pragati Express. Reach Mumbai by 1115 hrs. Departure for Jabalpur by train (3AC). Overnight train travel.

Day 2 Arrival at Jabalpur, proceed to Bandhavgarh.

Arrival at Jabalpur in the morning and proceed to Bhedaghat to visit to Dhuadhar waterfall. Return to Jabalpur for breakfast. Proceed to Bandhavgarh by AC SUVs. Reach Bandhavgarh by 1330 hours. Check-in to the wildlife lodge followed by sumptuous lunch and rest. Get introduced to this beautiful forest in an interactive orientation session this evening. Dinner and overnight stay at Bandhavgarh.

Day 3 Safaris at Bandhavgarh.

Explore different parts of Bandhavgarh on morning and evening jeep safaris. Participate in a unique 'knowledge sharing session' in the evening to know more about the wildlife seen during the first three safaris. Our Wildlife Expert will share his experiences and discuss about different facets of nature and wildlife. Overnight stay at Bandhavgarh.

Day 4 Safaris at Bandhavgarh.

Today you will further explore this beautiful forest on morning and evening jeep safaris. Evening will be spent sharing experiences with each other over a cup of coffee / tea. Overnight stay at Bandhavgarh.

Day 5 Morning safari at Bandhavgarh, proceed to Jabalpur.

One more jeep safari at Bandhavgarh, to maximise the chances of tracking 'The Big Cat' ! Depart for Jabalpur after lunch. Board train to Mumbai (3 AC). Overnight train travel.

Day 6 Arrival at Mumbai, proceed to Pune

Arrival at Mumbai CST by afternoon. Proceed to Pune by 11009 Sinhagad Express at 1430 hrs. Arrival at Pune Railway Station by 1840 hrs.

Charges

Camp Code: **BAN221016WS**

Charges (Per Person)

- Regular Fees: • INR 20400 /-
(Ex. - Pune)
- Early Bird Fees Was: INR 18400 /- (valid upto 22-07-2016).
(Ex. - Pune)

Charges Include

- 2S Rail fare for Pune - Mumbai - Pune train travel.
- 3AC Rail fare for Mumbai - Jabalpur - Mumbai train travel.
- Jabalpur - Bhedaghat - Bandhavgarh - Jabalpur travel by AC Innova.
- Accommodation in a wildlife lodge at Bandhavgarh in luxurious AC rooms (Quadruple sharing basis).
- Food for entire duration of the camp including train travel.
- Charges for 5 jeep safaris in the Reserve.
- Entry fees and Guide fees in the Tiger Reserve.
- Travel Insurance for every participant.
- Government Service Tax.

Charges Excludes

- Mineral water / cold drinks during journey or at the campsite.
- Personal expenditure of any kind (portage, telephone, laundry, room service etc.).
- Camera Charges.
- Medical charges / expenses, if incurred.
- Expenses that are incurred due to reasons beyond control of the organizers.
- Any other charges not mentioned in "Charges Include" list.

Discounts

- Group discount for 6 person: INR 600 /- (Per Person).
- Use Promo Code and get discount of INR /- (Per Person).
- Full Payment Discount: INR /- (Per Person).
- Others Discount: INR /- (Per Person).

Google Map

Click this link to see the map.

<https://www.google.com/maps/d/u/2/embed?mid=1tGmzmA1YBqpM9zvldGVY5fXu07c>