

## Panna Wildlife Camp (Ex- Mumbai)

For All Ages

Camp Code: PAN241216WO

Madhya Pradesh



### All Departure Dates

Sr.	Batch Dates	Camp Code
1.	29-09-2016 To 04-10-2016	PAN290916WO
2.	15-10-2016 To 20-10-2016	PAN151016WO
3.	22-10-2016 To 27-10-2016	PAN221016WO
4.	05-11-2016 To 10-11-2016	PAN051116WO
5.	24-12-2016 To 29-12-2016	PAN241216WO
6.	04-02-2017 To 09-02-2017	PAN040217WO

## Overview

Camp Code: **PAN241216WO**

Panna National Park is located in Panna and Chhatarpur districts of Madhya Pradesh in India. It has an area of 1645 sq.km. The Ken river, which flows through the Reserve from south to north, is home for Gharial and Mugger, and other aquatic fauna and is one of the least polluted rivers and a tributary of Yamuna. It is one of the sixteen perennial rivers of Madhya Pradesh and is truly the lifeline of the Reserve. Ken offers some of the most spectacular scenery to the visitor while it meanders for some 55 km through the reserve.

Dry and hot climate (during Summer months), in union with shallow Vindhyan soils has given rise to dry Teak and dry mixed forest. The dominating vegetation type is Miscellaneous Dry Deciduous forest interspersed with grassland areas.

Among the animals found here are the tiger, chital, chinkara, nilgai, sambhar and sloth bear.

The park is home to more than 200 species of birds including the bar-headed goose, honey buzzard, eagles, vultures being some of the highlights.

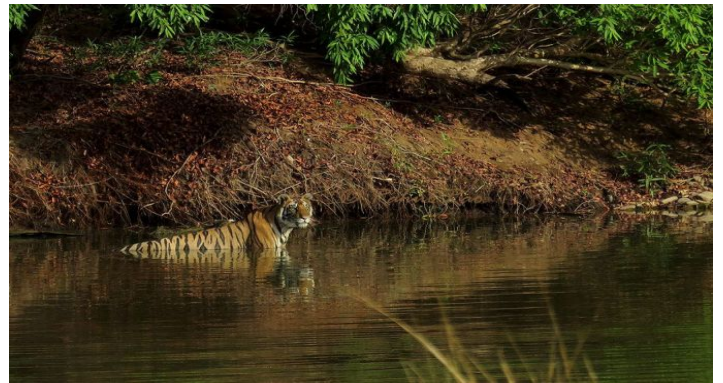
Highlights of the trip:

- 5 jeep safaris that ensure ample opportunities to see wildlife.
- Carefully crafted itinerary by experienced Wildlife Experts.
- Explore this beautiful jungle in the company of a Wildlife Expert from Foliage Outdoors.
- Accommodation in a wildlife lodge for 3 nights in deluxe AC rooms.
- Comfortable 3AC train travel from Mumbai - Jabalpur - Mumbai.
- Comfortable road travel by AC Innova (Jabalpur - Panna - Jabalpur).



## Photo Gallery

[More Images](#)



## Tour Itinerary

### Day 1 Mumbai to Jabalpur overnight travel.

Assemble at Mumbai CST and departure to Jabalpur by train (3AC). Overnight train travel.

### Day 2 Arrival at Jabalpur, proceed to Panna.

Arrival at Jabalpur in the morning. Breakfast at Jabalpur. Proceed to Panna by AC Innovas.

Reach our lodge at Panna by 1330 hours. Lunch and rest.

Get introduced to this beautiful forest in an interactive orientation session this evening. Dinner and overnight stay at Panna.

(B,L,D)

### Day 3 Safaris at Panna.

Explore different parts of Panna on morning and evening jeep safaris.

Participate in a unique 'knowledge sharing session' in the evening to know more about the wildlife seen during the first three safaris. Our Wildlife Expert will share his experiences and discuss about different facets of nature and wildlife. Overnight stay at Panna.

(B,L,D)

### Day 4 Safaris at Panna.

Today you will further explore this beautiful forest on morning and evening jeep safaris.

Evening will be spent sharing experiences with each other over a cup of coffee / tea.

Overnight stay at Panna.

(B,L,D)

### Day 5 Morning safari at Panna, proceed to Jabalpur.

One more jeep safari at Panna, to maximise the chances of tracking 'The Big Cat' as well !

Departure to Jabalpur after lunch. Board 12187 Mumbai Garibrath express (3 AC) at 1930 hours.

(B,L)

### Day 6 Arrival at Mumbai.

Arrival at Mumbai CST at 1215 hours. Tour concludes with a 'group selfie' and memories from 'the Emerald Forest !!!'

(B = Breakfast, L = Lunch, D = Dinner)

## Charges

Camp Code: **PAN241216WO**

### Charges (Per Person)

- Regular Fees:                      • INR 23000 /-  
(Ex - Mumbai)
- Early Bird Fees Was:              INR 21000 /- (valid upto 24-08-2016).  
(Ex - Mumbai)

### Charges Include

- 3AC Rail fare for Mumbai - Jabalpur - Mumbai train travel.
- Jabalpur - Panna - Jabalpur travel by AC Innova.
- Accommodation in a wildlife lodge at Panna in deluxe AC rooms (Triple sharing basis).
- All meals - Ex- Jabalpur.
- Charges for 5 jeep safaris in the Reserve.
- Entry fees and Guide fees in the Tiger Reserve.
- Government Service Tax.

### Charges Excludes

- Any airfare / train fare up to and back from Mumbai.
- Mineral water / cold drinks during journey or at the campsite.
- Personal expenditure of any kind (portage, telephone, laundry, room service etc.).
- Camera Charges.
- Medical Expenses if any.
- Expenses that are incurred due to reasons beyond control of the organizers.
- Any other charges not mentioned in "Charges Include".

### Add-Ons Charges

- INR 2000 / - Upgrade to Twin Sharing (for Indian Nationals)

Google Map

Click this link to see the map.

<https://www.google.com/maps/d/embed?mid=1FrRpjzoTmWninudRLBJ4iziNzwc>