

Bandhavgarh Wildlife Camp (Ex- Mumbai)

Camp Code: **BAN221016WO**

Madhya Pradesh

For All Ages



All Departure Dates

Sr.	Batch Dates	Camp Code
1.	15-10-2016 To 20-10-2016	BAN151016WO
2.	22-10-2016 To 27-10-2016	BAN221016WO
3.	12-11-2016 To 17-11-2016	BAN121116WO
4.	11-02-2017 To 16-02-2017	BAN110217WO

Overview

Camp Code: **BAN221016WO**

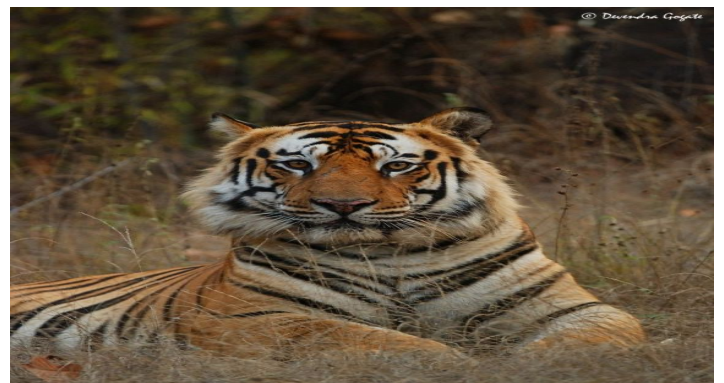
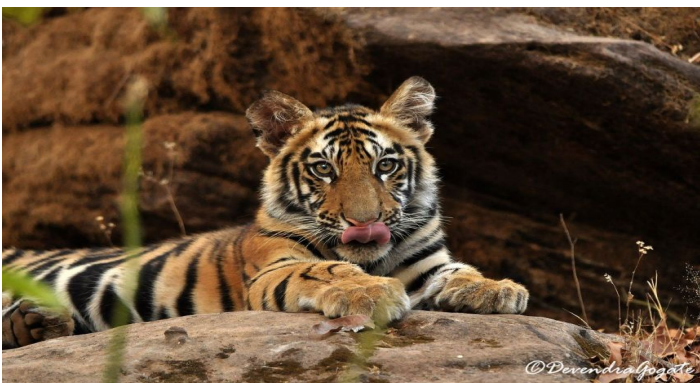
Set amongst Vindhya Hills, Bandhavgarh is one of India's premier areas for Tigers. It is best known as the "tiger land" of India, for the highest density of tigers, as compared to rest of the country. One is assured of sightings of this majestic animal almost any time of the year. The ruin of the ancient fort from which this park derives its name provides a stunning backdrop to this erstwhile hunting preserve of the Maharaja of Rewa. Bandhavgarh today attracts Tiger lovers from all over the world. It was here that the White Tiger was first recorded in the wild. The park has a great diversity of birds with a checklist of around 250 species.

Highlights of the tour :

- 5 jeep safaris that ensure great opportunities to see wildlife.
- Carefully crafted itinerary by experienced Wildlife Experts.
- Accommodation in a wildlife lodge for 3 nights in luxurious AC rooms.
- Comfortable 3AC train travel from Mumbai - Jabalpur - Mumbai.
- Comfortable road travel by AC Innova (Jabalpur - Bandhavgarh - Jabalpur).
- Visit to spectacular Dhuadhar waterfall near Bhedaghat.

Photo Gallery

[More Images](#)



Tour Itinerary

Day 1 Mumbai to Jabalpur overnight travel.

Assemble at Mumbai CST and departure to Jabalpur by train (3AC). Overnight train travel.

Day 2 Arrival at Jabalpur, proceed to Bandhavgarh.

Arrival at Jabalpur in the morning. Visit to Dhuadhar waterfall near Bhedaghat, where we will also have our breakfast. Proceed to Bandhavgarh by AC SUVs. Reach Bandhavgarh by 1330 hours. Check-in to the wildlife lodge followed by sumptuous lunch and much needed rest.

Get introduced to this beautiful forest in an interactive orientation session this evening. Dinner and overnight stay at Bandhavgarh.

(B,L,D)

Day 3 Safaris at Bandhavgarh.

Explore different parts of Bandhavgarh on morning and evening jeep safaris.

Participate in a unique 'knowledge sharing session' in the evening to know more about the wildlife seen during the first three safaris. Our Wildlife Expert will share his experiences and discuss about different facets of nature and wildlife. Overnight stay at Bandhavgarh.

(B,L,D)

Day 4 Safaris at Bandhavgarh.

Today you will further explore this beautiful forest on morning and evening jeep safaris.

Evening will be spent sharing experiences with each other over a cup of coffee / tea.

Overnight stay at Bandhavgarh.

(B,L,D)

Day 5 Morning safari at Bandhavgarh, proceed to Jabalpur.

One more jeep safari at Bandhavgarh, to maximise the chances of tracking 'The Big Cat' as well ! Departure to Jabalpur after lunch. Board train to Mumbai (3 AC). Overnight train travel.

(B,L)

Day 6 Arrival at Mumbai.

Arrival at Mumbai CST. Tour concludes with a 'group selfie' and memories from 'Land of the Tiger !!!'

(B = Breakfast, L = Lunch, D = Dinner)

Charges

Camp Code: **BAN221016WO**

Charges (Per Person)

- Regular Fees: • INR 23000 /-
(Ex - Mumbai)
- Early Bird Fees Was: INR 21000 /- (valid upto 22-06-2016).
(Ex - Mumbai)

Charges Include

- 3AC Rail fare for Mumbai - Jabalpur - Mumbai train travel.
- Jabalpur - Bandhavgarh - Jabalpur travel by AC Innova.
- Accommodation in a wildlife lodge at Bandhavgarh in luxurious AC rooms (Triple sharing basis).
- All meals - Ex- Jabalpur.
- Charges for 5 jeep safaris in the Reserve.
- Entry fees and Guide fees in the Tiger Reserve.
- Government Service Tax.

Charges Excludes

- Any airfare / train fare up to and back from Mumbai.
- Mineral water / cold drinks during journey or at the campsite.
- Personal expenditure of any kind (porterage, telephone, laundry, room service etc.).
- Camera Charges.
- Medical charges / expenses, if incurred.
- Expenses that are incurred due to reasons beyond control of the organizers.
- Any other charges not mentioned in "Charges Include" list.

Add-Ons Charges

- INR 2000 / - Upgrade to Twin Sharing

Google Map

Click this link to see the map.

<https://www.google.com/maps/d/embed?mid=1J2VfUqj6l003BDafWQ1W1-evx2s>