

## Sri Lanka Eco-Tour

Camp Code: **SRI140117IO**

For All Ages



### All Departure Dates

Sr.	Batch Dates	Camp Code
1.	14-01-2017 To 22-01-2017	SRI140117IO

## Overview

Camp Code: **SRI140117IO**

We are happy to invite you on an unforgettable holiday in Sri Lanka, one of the most ancient and captivating countries in the world. Changes of landscape, climate and terrain every 2.5 hours drive is amazing, making for a remarkable Sri Lanka holiday. Although recent peace has opened up the entire 'island of serendipity' to visitors, tourism here remains under-subscribed, leaving you to enjoy your Sri Lanka holiday in blissful serenity. Undeveloped beach paradises, a startlingly rich cultural heritage, a wide variety of tropical wildlife and adventure experiences... as well as warmly welcoming people and irresistible cuisine.

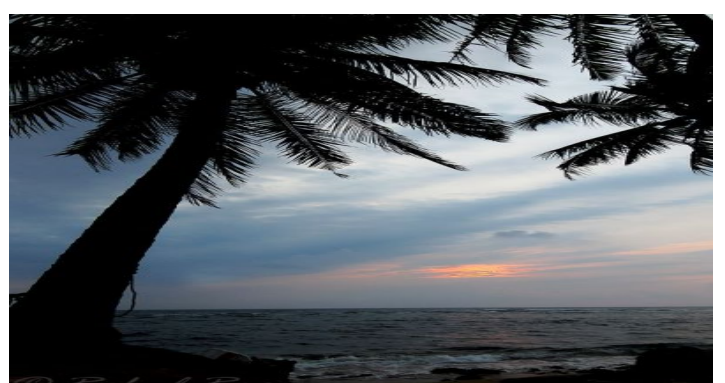
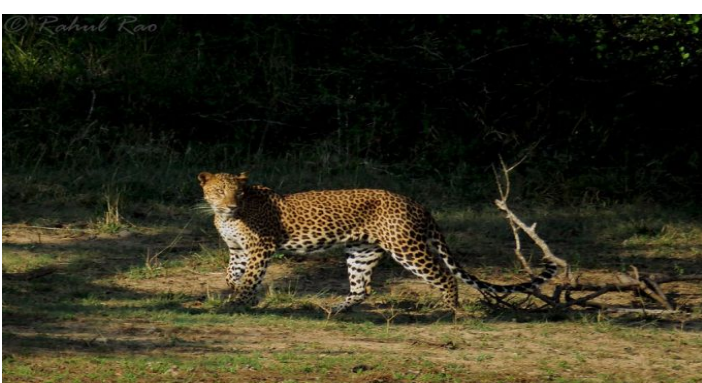
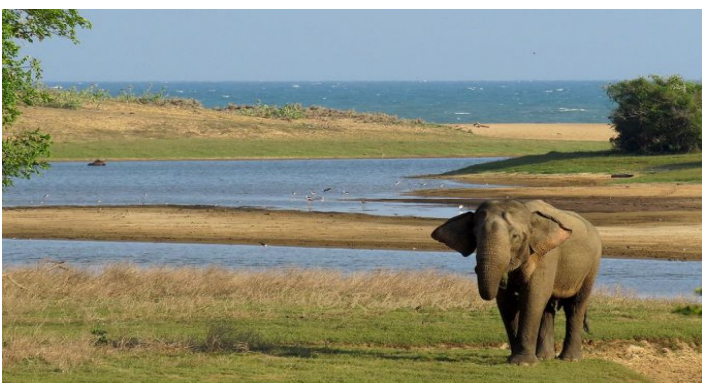
Highlights of the eco tour:

- Comprehensive itinerary offering the perfect blend of sightseeing and wildlife.
- Visit the unique Elephant Orphanage at Pinnawela .
- Trek to the rock fortress of Sigiriya - a UNESCO World Heritage Site.
- Explore the Dambulla Cave Temple, the largest painted caves on earth.
- Visit to Sacred Temple of Tooth Relic in Kandy.
- Visit Nuwara Eliya, the home of the World's finest Tea.
- Visit to the Horton Plains - a UNESCO World Heritage Site.
- Visit to Ravana Waterfalls.
- Jeep Safaris at Yala National Park.
- Visit to the beautiful coastal destination in Sri Lanka - Bentota.



Photo Gallery

More Images



## Tour Itinerary

### Day 1 Colombo Airport - Pinnawala - Sigiriya

Arrival and assemble at Bandaranayke International Airport - Colombo at 0600 hrs. Transfer to a hotel in Sigiriya (Approx 5 hrs drive). En-route visiting the Elephant Orphanage in Pinnawela, which is a home to about 60 Elephants found abandoned or orphaned in the wild. Lunch en route / at Sigiriya. Dinner and overnight stay at hotel in Sigiriya.

### Day 2 Sigiriya

After breakfast hotel, trek the UNESCO World Heritage site - Sigiriya (Lion's Rock). These are the ruins of an ancient palace in a 200m high rock fortress, overlooking the beautiful plains of North-Central Sri Lanka. Built for an exiled Indian prince, the breathtaking ruins are one of Sri Lanka's main tourist attractions and date back to AD 477. Despite its age, Sigiriya still retains much of its former beauty and features some of the finest examples of ancient art in the form of wall paintings, as well as a network of attractive gardens and reservoirs, and Sigiriya's namesake "a gigantic pair of lion's paws cut into the rock. With its fascinating history and unerring beauty, Sigiriya is often referred to as the 8th wonder of the world. Arrival at the hotel for lunch. Evening at Leisure. Dinner and overnight stay at hotel in Sigiriya.

### Day 3 Sigiriya - Dambulla - Matale - Kandy

After breakfast, departure for Kandy. On the way visit Dambulla Cave Temple. Dambulla Cave Temple located at an elevation of 1118 feet from the sea level raises a massive rock from the surrounding plains of Dambulla of 600 feet high and over 2000 feet in length. It is home to the world's most acclaimed Cave complex of magnificent Buddha Images and Rock Paintings of vivid colors and shapes constructed and painted from around 2nd Century BC (Anuradhapura era) and continued up to the Kandyan era of the 18th Century. The five main temple caves cover over 1000 square meters, these were formed out of a deep cavern, part natural and part excavated. One cave consists of a reclining Buddha over 15 meters in length and another holds 50 statues in a variety of positions and is decorated in glowing colors. The ceiling of this ancient monastery is covered with the colorful frescoes. Long strips of narrative paintings depict episodes of a story such as the life of Buddha or the coming of Buddhism to Sri Lanka. Lunch en route to Kandy. Proceed to Kandy. Visit the Temple of the Tooth Relic in Kandy. Sri Dalada Maligawa in Kandy is the most prominent and sacred Buddhist shrine in Sri Lanka, even in the world. The relic of the tooth is kept in a two-story inner shrine fronted by two large elephant tusks. The relic rests on a solid gold lotus flower, encased in jeweled caskets that sit on a throne. The temple is joined to the Pattiripuwā (Octagon) tower, built in 1803, that was originally a prison but now houses a collection of palm-leaf manuscripts. The king's palace is also in the temple compound. Dinner and overnight stay at hotel in Kandy.

### Day 4 Kandy - Nuwara Eliya

After breakfast at hotel, departure for Nuwara Eliya. En-route visit tea plantation and tea factory. No visit to the hill country is complete without a visit to a tea estate which for many, epitomize the image of Sri Lanka. Surrounded by the breathtaking, idyllic landscape, you will also get a chance to taste and purchase some of the world's finest tea. Lunch en route. Check in to hotel. Dinner and overnight stay at hotel in Nuwara Eliya.



#### Day 5 Nuwara Eliya - Horton Plains - Nuwara Eliya

Breakfast at hotel. Departure for Horton Plains. This misty grassland plateau is a National Park and UNESCO World Heritage Site. It sits at an elevation of more than 2,000 m (6,500 ft) about 20 km from Nuwara Eliya. There is a strange and mysterious silence about the place, and it has some excellent walks. From this plateau rise Sri Lanka's second - and third-highest mountains: Thotupola Kanda (2,357 m) and Kirigalpota (2,389 m). The grassland is interspersed with patches of forest and some unusual vegetation that grows only at these higher altitudes. The trees are encrusted with lichens, and giant ferns and rhododendrons also flourish. The dense forests are home to some rare flora and fauna. Dinner and overnight stay at hotel in Nuwara Eliya.

#### Day 6 Nuwara Eliya - Yala

After an early breakfast at the hotel, departure for Yala National Park. On the way visit Rawana waterfall. Rawana waterfall is breathtaking waterfall, 1080 feet high (cascades into several falls) close to the road from Ella to Wellawaya about 6 Km south from Ella. Proceed to Yala. Dinner and overnight stay at hotel in Yala.

#### Day 7 Yala National Park

Full-day safari at Yala with packed lunch. Yala National Park is famously known for its highest densities of the leopard in the world and this is the second largest national park in Sri Lanka. Yala is home to Leopards, elephants, Sloth bear, Sambar and spotted deer, jackal, mongoose, wild boar, wild buffaloes, langur and macaque monkeys. Yala is also famous for its bird life. Dinner and overnight stay at hotel in Yala.

#### Day 8 Yala - Galle - Bentota

Half-day Safari at Yala. After breakfast you will leave for Bentota. On the way visit Galle. Galle is a bustling provincial capital and administrative centre for the South. After this it is time to get up-close and personal with some of Sri Lanka's most adorable sea creatures at a turtle farm, before returning home for the evening to Bentota, where we stay overnight at a hotel in Bentota.

#### Day 9 Departure

After breakfast leave for Colombo. Lunch at Colombo. Half-day City Tour (Time-permitting) and Late-evening transfer to the Colombo airport.

## Charges

Camp Code: **SRI140117IO**

### Charges (Per Person)

- Regular Fees: • INR 1255 /-  
(Ex - Colombo)

### Charges Include

- Transport : Colombo - Sigiriya - Kandy - Nuwara Eliya - Yala - Bentota - Colombo using dedicated AC Van.
- Accommodation at Sigiriya on twin-sharing basis.
- Accommodation at Kandy on twin-sharing basis.
- Accommodation at Nuwara Eliya on twin-sharing basis.
- Accommodation at Yala on twin-sharing basis.
- Accommodation at Bentota on twin-sharing basis.
- Meal charges from Breakfast on Day 1 to lunch on Day 9.
- All activities and sightseeing as mentioned in the itinerary on sharing basis.
- Visa Fees, Entry fees and permit charges for Indian Nationals as per the itinerary.
- Govt. Service Tax.

### Charges Excludes

- Any Airfares and taxes.
- Mineral water / cold drinks / beverages during journey or at the Hotels.Â
- Camera Charges.Â
- Personal expenditure of any kind (Porterage, Telephone, Laundry, room service etc).
- Medical Expenses if incurred.Â
- Tips / Gratuities.Â

- Expenses that are incurred due to reasons beyond control of the organizers.
- Any other charges not mentioned in "Charges Include".

## Google Map

Click this link to see the map.

[https://www.google.com/maps/d/u/2/embed?mid=1SxhZfRq\\_RPb6XlaW3gc-GDposOw](https://www.google.com/maps/d/u/2/embed?mid=1SxhZfRq_RPb6XlaW3gc-GDposOw)